

Entry Form

I/We submit the following entry for consideration in the 2012 Engineering Excellence Awards.

Project Title:

Summary of Project Details (Maximum of 50 words)

The six elective criteria by which the project is to be judged are:

1..... 2..... 3.....
4..... 5..... 6.....

PROJECT ENTRANTS

The following parties are to be considered Joint Entrants in submitting this project for consideration.

Joint Entrant: Joint Entrant:
Organisation: Organisation:
Contact Person: Contact Person:
Title: Title:
Telephone: Telephone:
Facsimile: Facsimile:
Email: Email:

DETAILS OF THE PRINCIPAL CONTACT FOR THE PROJECT

Name of organisation:
Address:
Contact Name: Title:
Telephone: Facsimile: Email:

I/We agree to abide by the conditions of entry and all other conditions governing the 2012 Engineering Excellence Awards and are duly authorised to submit this entry on behalf of the Project Entrants named on this form:

Signature: Date:
Name: (printed).....

HOW TO ENTER

- 1. Register interest - Mail or deliver your entry form to the Newcastle Division, Engineers Australia no later than 5.00pm 31st October 2011. Entry forms for Engineering Excellence should be accompanied by a non-refundable entry fee of \$900 (+gst), which provides 4 tickets to Awards night. Individual entrants or organisations with less than 10 personnel may pay a reduced entry fee of \$500 (+gst), which provides 2 tickets to the Awards night. Payment can be made by cheque or credit card. The decision of how payment of entry fees are to be split between joint entries is the entrants' responsibility.
- 2. Submission lodgement - Forward your completed submissions to Engineers Australia - Newcastle Division, no later than 5.00pm 31st January 2012.

GENERAL INFORMATION

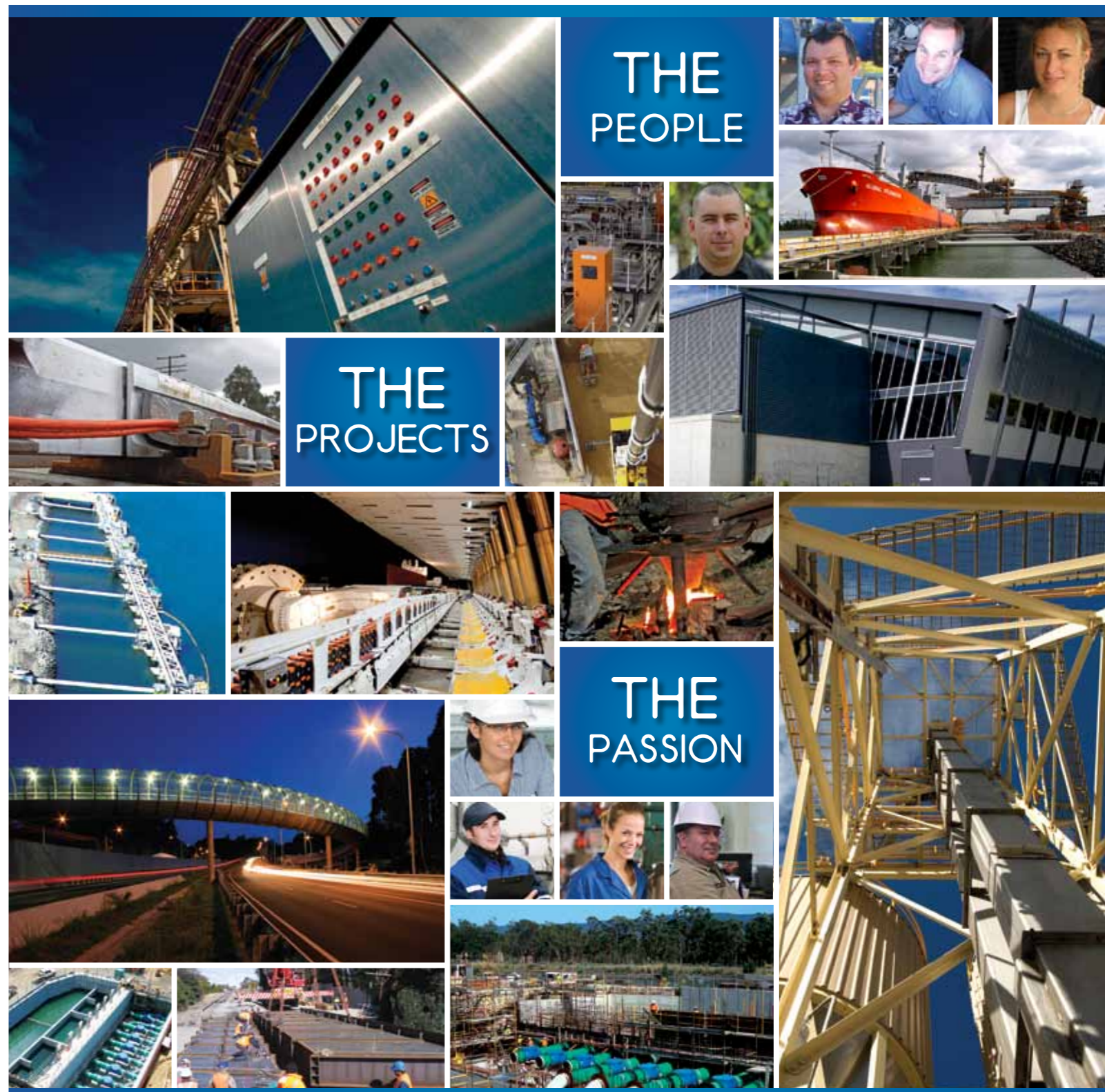
Entrants will be withdrawn from the competition if inadequate information is supplied for judging. Entrants may be requested to supply supplementary information. The Newcastle Division reserves the right to retain and publish photographs and descriptions of the projects entered. Engineers Australia accepts no liability regarding any loss of patent rights or other commercial considerations.

FURTHER INFORMATION - Please contact Engineers Australia - Newcastle Division.

Tel: (02) 4926 4440 Fax: (02) 4929 7121 Email: hlink@engineersaustralia.org.au Delivery/Postal Address: 122 Parry Street, Newcastle West NSW 2302



2012 Engineering Excellence Awards



Major Sponsor



Award Sponsors



Supporting Sponsors



March 2012

Register your interest by 31st October 2011

2012 Engineering Excellence Awards

THE
PEOPLE

THE
PASSION

THE
PROJECTS

Engineering Excellence Awards honour outstanding achievement in engineering. You are invited to promote and be rewarded for, the outstanding work undertaken by you or your engineering team, through public acknowledgment by your peers.

The 2012 Engineering Excellence Awards will provide tangible benefits for entrants through a range of promotional activities, at a local and national level.

Excellence, distinction, merit, perfection and quality are the characteristics that winning entries will exhibit and will not be judged in comparison to others.

This approach has been adopted by the Newcastle Division of Engineers Australia to ensure each entrant is evaluated according to its merits. It also recognises that excellence and exceptional engineering can take many forms - large or small, traditional or new age, technically complex or astonishingly simple.

Winners of the Newcastle Division 2012 Engineering Excellence Awards will be eligible to enter the Australian Engineering Excellence Awards to be held in Canberra in 2012.

Enter and You Will Receive

Each entrant will receive up to four complimentary tickets to the Engineering Excellence Awards dinner, a black tie presentation for 350 guests, to be held in Newcastle on Friday 11th May 2012. Entrants will also have first opportunity to secure additional tickets.

Your engineering firm will receive further recognition during the presentation evening, through the presentation program.

All finalists will be presented with a certificate recognising the acceptance of their project as a finalist. These will be presented at the Awards night. Entries who are winners will receive an impressive glass art trophy.

Eligibility for Engineering Excellence Awards

To be eligible to enter the 2012 Engineering Excellence Awards, the entry can be constructed anywhere in the world, however, it must be substantially engineered in the Newcastle Division (see map for division boundaries).

All types of engineering achievements including design, construction works, studies, processes and maintenance will be considered for the awards.

Entrant's projects must have been substantially completed within the 24 month period prior to the closing date for entries. However to enable assessment by the judges, some projects would need to have been completed and put into service prior to commencement of judging. The project must not have received an Excellence Award from any other Division of Engineers Australia.

To Enter

To accommodate the diversity of engineering endeavour, the entries will be judged according to the criteria set down by Engineers Australia: six mandatory and six elective criteria chosen by the entrant from the range provided. Intention to submit to be received by 31st October 2011.

Mandatory Criteria

1. Use of sound engineering practice and principles
2. Quality of work and procedures used
3. Originality and ingenuity of the solution
4. Benefit to the community
5. Adherence to the budget and program
6. Extent to which the work has provided a safe & healthy working environment

Elective Criteria (entrants to choose six)

- **CLEVER SOLUTION:** Simplicity of the engineering solution
- **CLIENT/COMMUNITY FOCUS:** Attention given to the needs of the users
- **COLLABORATION:** Cooperation with other disciplines and professions and effective use of community, government and industry consultation
- **COMMERCIAL VIABILITY:** Sales, export or import replacement potential of the project and its intellectual property
- **COMPLEXITY:** Technical complexity
- **CONTINUOUS IMPROVEMENT:** Attention to value adding
- **DESIGN:** Use and development of new design and construction practices
- **ENGINEERING TEAM:** Outstanding achievements in the fields of human resources, industrial relations and occupational, health and safety
- **ENVIRONMENTAL FOCUS:** Positive impact on the environment
- **HERITAGE:** Heritage value
- **INNOVATION:** Use of innovation and technology
- **RESEARCH:** Quality and extent of research
- **SUSTAINABILITY:** Contribution to sustainable development and economy of resource usage
- **TECHNOLOGY:** Integration and innovative use of computer automation, intelligence, modelling systems or multi-media techniques

The Submission

Entrants should supply, by no later than the 31st January 2012, three (3) hard copies and one (1) electronic copy of the submission containing the following requirements:

1. The submission should contain a full description of the project as to its purpose, the design approach, any special construction features, and the names and location of specialists employed for the design, construction or management. The content, length and form of the description of the submission is at the entrant's discretion.
2. The submission should list and address the six mandatory criteria and six elective judging criteria on which it is based.
3. A title page should include:
 - Entry name
 - Name of entry contact, together with title, contact details
 - Role of the organisation submitting the entry
 - Role of others including designers, contractors and project manager



The Presentation Requirements

At the Awards event, there will be two mediums used to present entrants to the audience - a visual presentation and Awards brochure. The visual presentation will be the focus of the event. All finalists will be acknowledged in the introduction, and award recipients will further be acknowledged as the presentations occur. The Awards brochure will be distributed at the event, describing each project and acknowledging sponsors.

Entrants are therefore asked to supply with their submission and by the 31st January 2012

- A minimum of 10 digital photos as jpegs (300dpi at A4 size), depicting aspects of the project. One photo MUST be identified as the primary photo for use in the awards booklet.
- A video of either broadcast quality (not VHS), DVD or high resolution quicktime files.
- An electronic file (high resolution TIFF or an EPS file) of company logo.
- A 75 word description of the project, describing the scope of the project and reflecting the important features described in the submission to be used in the Presentation Brochure.
- A 20 word description of the project which will assist us in the visual presentation.

Details of Entrant

On the entry form you are required to provide details of all entrants you wish to acknowledge and details of the principal contact person for the project

All Finalist projects receive:

- One framed certificate and a certificate for each additional entrant
- Acknowledgment in awards presentation, brochure and in any publicity prior to the Awards

All Highly Commended projects receive:

- One framed certificate and a certificate for each additional entrant
- Acknowledgment in awards presentation, brochure and post Awards publicity

All Award winning projects receive:

- One impressive glass art trophy
- One framed certificate for each entrant
- Acknowledgment in awards presentation, brochure and post Awards publicity
- Excellence Award winners will be eligible to enter the National Awards

