

Position description

POSITION TITLE:	Chartered Engineer
WORK UNIT:	Chartered Assessment
RESPONSIBLE TO:	General Manger, Chartered Assessment
LOCATION:	Flexible Location
PURPOSE:	The position is required to assess the suitability of Chartered candidates using the National Competency Based Assessment Standard. The Chartered Engineer may also be required to undertake assessments of applicants for other purposes, including the National Engineering Register or migration skills assessment.

Flexible work hours and conditions including the possibility of some work from home. This would suit an experienced, adaptable and creative engineer returning to the workforce that aspires to grow in a collaborative team environment.

Duties

- Mentor and provide advice to candidates to assist them to achieve Chartered status
- Contribute to and promote the development of the profession
- Work collaboratively to improve the team performance
- Other duties as directed

Work health & safety (WHS) obligations

- Take reasonable care for your own health and safety in the workplace
- Take reasonable care that your acts or omissions do not adversely affect the health and safety of others in the workplace
- Cooperate with your employer about matters of health and safety
- Comply with any reasonable instruction and cooperate with Engineers Australia's WHS policies and procedures
- Familiarise the broad meaning of 'workplace' in health and safety legislation and Engineers Australia WHS policies and procedures.

Communication and relationships

- Chartered candidates – provide advice and guidance on becoming Chartered
- Provide information / advice on how to respond to queries concerning Chartered Assessment to Engineers Australia staff including
 - Member Services
 - Business Development
 - Engineering Business Group
 - Divisions
- Panellists assisting with interviews for Chartered

Diversity and Inclusion at Engineers Australia

Engineers Australia is an equal opportunity employer and we embrace diversity. We are committed to building a team that represents a variety of backgrounds, perspectives, and skills. We are committed to creating a safe inclusive environment for all employees.

Should you need any reasonable adjustments during this recruitment process please email HR@engineersaustralia.org.au

Selection criteria

1. Four-year engineering degree (Washington Accord) or a qualification deemed equivalent by Engineers Australia
2. Chartered Professional Engineer (CPEng) with at least 15 years engineering experience or eligible for Chartered Professional Engineer
3. Have a demonstrated capacity to work with limited supervision
4. Proficient communication skills both written and oral
5. Confidence in face to face stakeholder engagement
6. Sensitivity to cross-cultural differences with a proven ability to liaise both professionally and effectively with a broad range of internal and external stakeholders



ENGINEERS AUSTRALIA ORGANISATIONAL VALUES



FOCUS ON CUSTOMERS

We are committed to delivering exceptional products, services and experiences for our members and customers.

We do this by:

- caring about our members and customers, listening to them and seeking to understand their needs
- helping our customers achieve their goals
- providing service excellence
- using our member's funds prudently and in a sustainable way

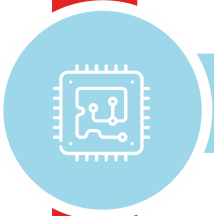


ACHIEVE TOGETHER

We are at our best when we collaborate and use our collective expertise.

We do this by:

- working inclusively as 'One Team' to create a positive and enthusiastic culture
- valuing everyone's contribution, respecting the uniqueness of individuals
- sharing information and ideas openly and broadly
- encouraging and supporting others to do their best



EMBRACE PROGRESS

We actively seek out ways to improve through adopting ideas from our colleagues, customers and the world around us.

We do this by:

- staying informed in our ever changing world
- being agile and adopting new and simpler ways of working
- actively coaching, mentoring and encouraging creative thinking
- accepting mistakes can happen and learning from them



ACT WITH INTEGRITY

We earn trust by being authentic and accountable.

We do this by:

- doing the right thing, even when it is not easy
- giving and expecting our best, always
- keeping our promises, saying what we mean and doing as we say
- communicating openly, honestly and respectfully, being mindful of impact