



Figure 4: Class AA 1500 GWh site near Lithgow with a head of 620 m

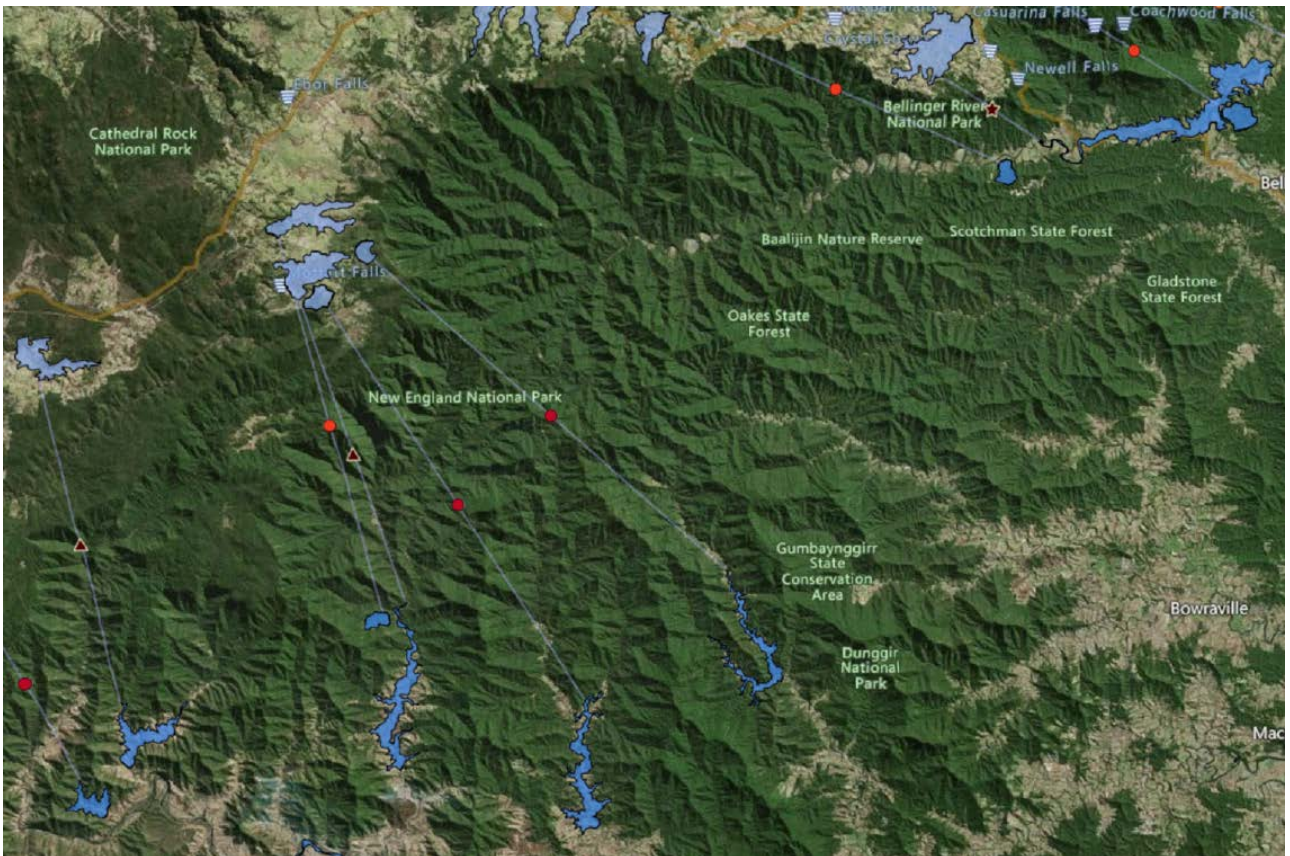


Figure 5: 150 GWh Class AAA and AA sites near Coffs Harbour with heads of 700-1300 m

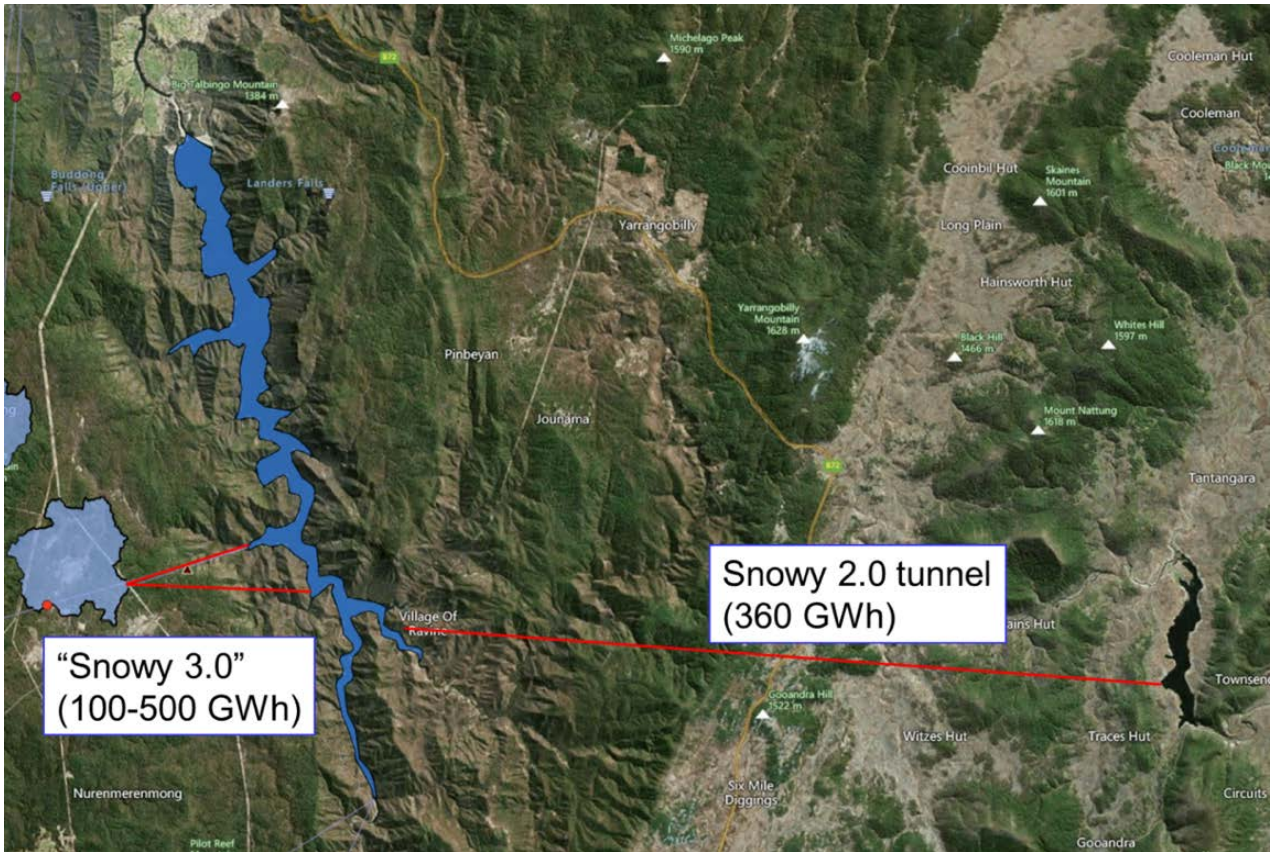


Figure 6: Hypothetical Snowy 3.0 pumped hydro site

About the author

Andrew Blakers is a Professor of Engineering at the Australian National University (ANU). He was a Humboldt Fellow and has held Australian Research Council QEII and Senior Research Fellowships. He is a Fellow of the Academy of Technological Sciences and Engineering, the Institute of Energy and the Institute of Physics. He is a Public Policy Fellow at ANU. He has published approximately 300 papers and patents.