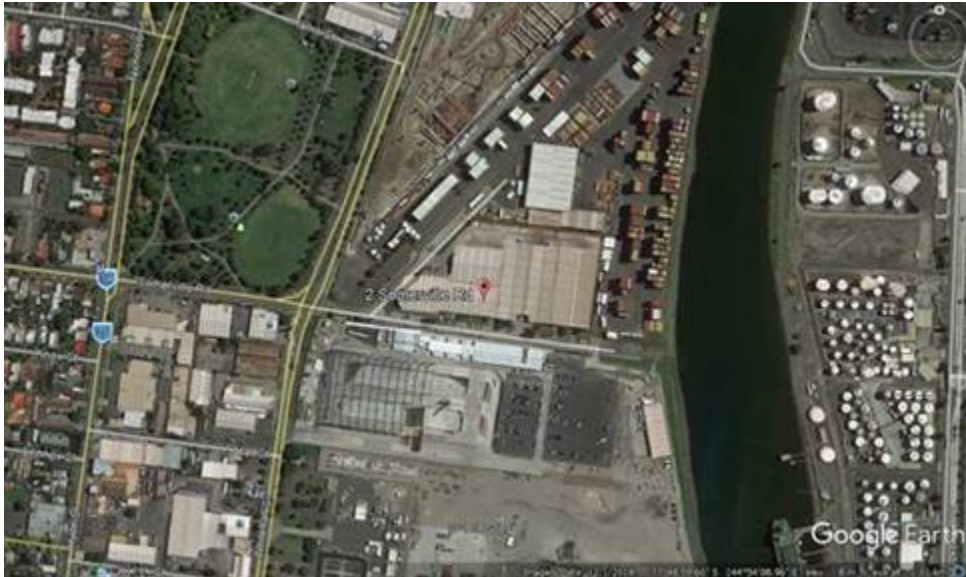


Meeting Point Details: West Gate Tunnel Project Site Visit

The site visit starts at 11am sharp and will end at 1pm.

Meet at the **Visitor Centre**, which can be accessed through the visitor centre car park at 2 Somerville Road (opposite Murrays Coaches). Visitors cannot access the site through the main gate at 221 Whitehall Street.



Please note: All participants must arrive by 11am, as a safety induction will take place at 11am at the visitor centre.